



+ Automatic Vehicle Management System

# PSItraffic/AVMS Reliable transport with bus and tram

# PSItraffic/AVMS

Efficiently controlling complex processes.  
For reliable public transport and optimal passenger service.

When is the next bus or the next tram scheduled to arrive? Will I reach my connection? How to reach my goal the fastest? Bus and train passengers ask themselves these and similar questions every day. More than anything, they want to reach their destination on time and be informed quickly and reliably in case of delays. Transport companies can only face these challenges with modern IT systems.

The PSItraffic Automatic Vehicle Management System (AVMS) is one building block for the management of daily operations in public transport. The system tracks the locations of all vehicles, compares them with the planned data

and provides the dispatcher with a complete overview of operational processes. Using digital maps and graphical views, you can quickly get an overview of the situation and make the right decisions in case of disruptions.

Real-time data provide passengers with information about their connections in the vehicles, at bus stops or via mobile devices.

PSItraffic/AVMS ensures smooth and on-time operation – an important prerequisite for satisfied passengers and maintaining your competitiveness.

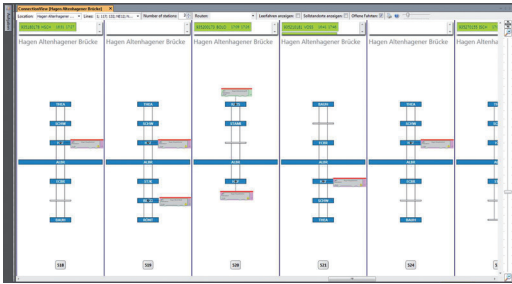
Reliable operations, reliable connections, online passenger information, efficient incident management.

PSItraffic supports you in daily operations.

- + Multi-client capability**  
Several companies can be integrated in PSItraffic. The dispatchers either work for your company or for multiple clients.
- + Tracking**  
GPS, GLONASS or Galileo – Your buses and trains always know where they are and report this to the control centre.
- + Communication**  
For voice transmission, PSItraffic/AVMS uses analogue, digital or mobile IP data.
- + Forecast**  
Vehicles report their locations to the control centre. PSItraffic/AVMS reliably calculates arrival times at the next stops in real-time.
- + Dispatch**  
An integrated incident and detour management system enables the fast recovery of regular operations.
- + Passenger information**  
PSItraffic/AVMS provides real-time passenger information – on displays and acoustically, in vehicles, at stops and on mobile devices.
- + Ensuring connections**  
The system checks in real-time whether connections can be maintained. If this is not the case, the dispatcher is alerted and can act accordingly. Drivers and passengers are informed.
- + On-demand traffic**  
Dial-a-ride buses are included in the system and can also be managed.
- + Quality management**  
PSItraffic/AVMS collects historical operating data, analyses it graphically and produces management reports.
- + Vehicle technology**  
We work together with expert partners for the selection of the on-board computer and ticket printer and the installation of the equipment in your vehicles.



## High usability

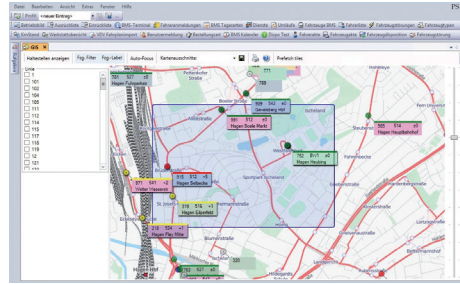


Even complex processes must remain simple to control. This is why the design and usability of interfaces and dialogues represent a special challenge for us.

The constant communication with you forms the basis for the required customisations and developments.

- + Clear menu structure
- + Graphical and table views
- + Individual customisations and views
- + Comprehensive navigation functions

## Integration and openness



Our many years of experience in interface development are the basis for a future-proof IT infrastructure. The use of standard interfaces and the creation of new standards make the exchange of data with existing IT systems secure and stable.

- + Standard interfaces for journey and roster planning, for personnel deployment and for additional AVM systems
- + Ticket printers/on-board computers
- + Displays, web-based information
- + Depot management system
- + Quality management system

## Your benefits



- + Monitoring operations
- + Efficient action in case of disruptions
- + Integration of ticket printers/on-board computers
- + IP-based communication with the drivers



- + Real-time passenger information
- + Integrated quality management system (Business Intelligence)
- + High-quality service for passengers





PSI Transcom GmbH

Dircksenstraße 42-44  
 10178 Berlin  
 Germany  
 Phone: +49 30 2801-1610  
 Fax: +49 30 2801-1032  
 info@psitranscom.de  
 www.psitrans.com



Excerpt from our customer list



Hagener Straßenbahn AG



Pictures: Joachim Kloock, istockphoto, Fotolia

PSI 